

Grasswood Development Land

HIGHWAY 11 & FLORAL ROAD
RM OF CORMAN PARK



FOR SALE

143.9 ACRES AT GRASSWOOD JUNCTION

Grasswood Junction development site rezoned to DC2 Arterial Commercial

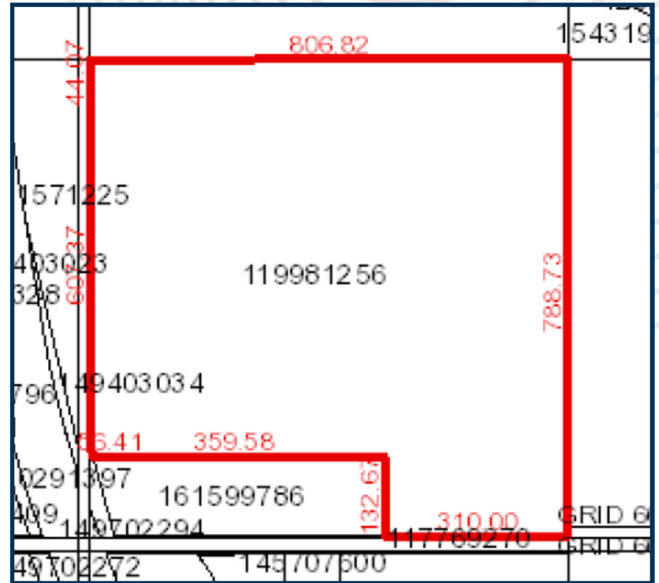
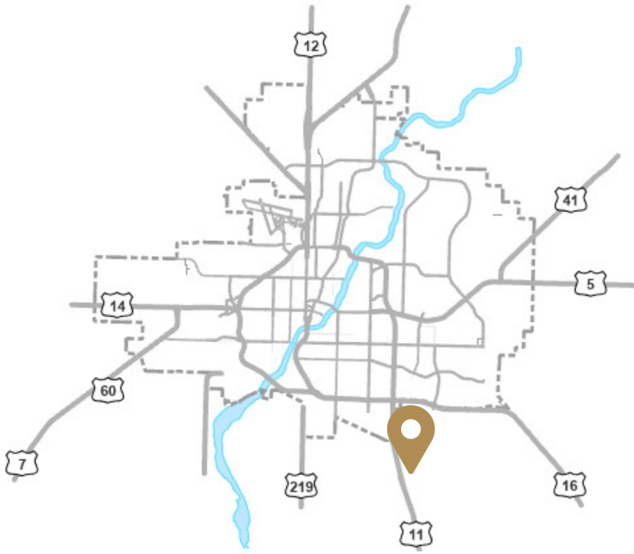
- Located south of the City of Saskatoon, the subject falls within the P4G Planning District in Corman Park and just west of the proposed Saskatoon Freeway
- Ideally situated just off Highway 11 South
- Future development site falls under P4G zoning bylaws permitting retail buildings under 35,000 SF, services supporting a residential neighbourhood, public utility and municipal facilities.
- Discretionary use permits auto repair shops.
- Concept plan is available



ALLSASK
REAL ESTATE & CONSULTING

Brian Peberdy
Vice President | Sales Associate
306.221.6090
brianpeberdy@allsask.com

Glen Paziuk
Vice President | Sales Associate
306.241.8884
glenpaziuk@allsask.com



Parcel detail

Specifications

Site Area	Possession
143.9 AC	Negotiable
Zoning	Property Tax (2025)
DC2	\$16,672.82
Rural Convenience Commercial	
Parcel	
119981256	



Proposed Subdivision Plan

\$7,194,856.00

Asking Price
(\$49,999.00 per AC)



ALLSASK
REAL ESTATE & CONSULTING

920 606 Spadina Crescent East
Saskatoon SK S7K 3H1
www.allsask.com
306.657.7676

THIS DOCUMENT HAS BEEN PREPARED BY ALLSASK (ALLSASK REAL ESTATE & CONSULTING CORP.) FOR ADVERTISING AND GENERAL INFORMATION ONLY. THE INFORMATION CONTAINED HEREIN WAS OBTAINED FROM OUTSIDE SOURCES BELIEVED TO BE RELIABLE AND ALLSASK DOES NOT ACCEPT NOR ASSUME ANY RESPONSIBILITY, WARRANTIES, OR LIABILITIES OF ANY KIND, DIRECT OR CONSEQUENTIAL, FOR THE INFORMATION OR THE RECIPIENT'S RELIANCE UPON SAME. THOSE INTERESTED ARE RESPONSIBLE TO UNDERTAKE THEIR OWN INVESTIGATIONS AND INQUIRIES PERTAINING TO THIS INFORMATION AND ITS RELIABILITY.