

Development Opportunity

LOCATED IN SOUTH EAST P4G PLANNING AREA



FOR SALE - 143.59 AC INVESTMENT OPPORTUNITY

Located just minutes south of the City of Saskatoon

- Located within the new P4G South East Concept Plan with easy access to the Stonebridge retail district, Meadows Market, Grasswood Junction Business Park and Costco
- Identified as an area of future urban residential development and further study in the P4G land use map, this site offers ideal potential for a subdivision close to the City of Saskatoon
- CNR rail line and SaskWater pipeline along north boundary of land with gas and power accessible along the south boundary and Floral Road
- Adjacent to the proposed future Saskatoon Freeway
- Less than one (1) kilometer south of Greenbryer Golf and Country Club and Greenbryer Estates



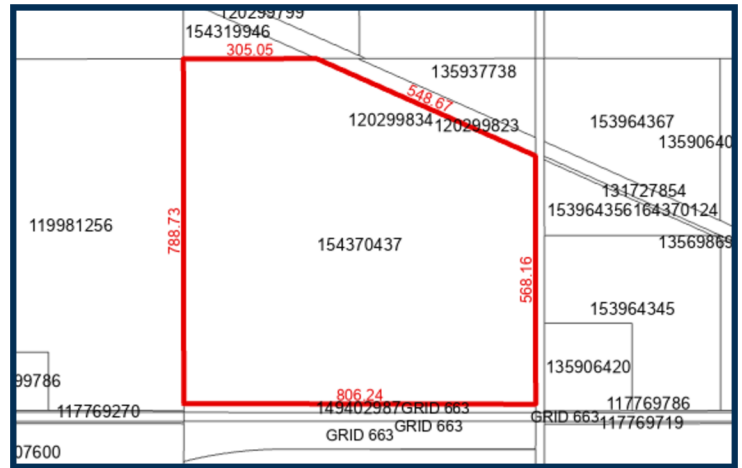
ALLSASK
REAL ESTATE & CONSULTING

Brian Peberdy

Vice President | Sales Associate
306 221 6090
brianpeberdy@allsask.com

Glen Paziuk

Vice President | Sales Associate
306 241 8884
glenpaziuk@allsask.com



Specifications

Site Area
143.59 AC

Possession
Negotiable

Zoning
Ag (Agricultural)

Parcel
154370437

Property Tax (2024)
\$1,006.31

\$3,995,000.00

Asking Price



ALLSASK
REAL ESTATE & CONSULTING

THIS DOCUMENT HAS BEEN PREPARED BY ALLSASK (ALLSASK REAL ESTATE & CONSULTING CORP.) FOR ADVERTISING AND GENERAL INFORMATION ONLY. THE INFORMATION CONTAINED HEREIN WAS OBTAINED FROM OUTSIDE SOURCES BELIEVED TO BE RELIABLE AND ALLSASK DOES NOT ACCEPT NOR ASSUME ANY RESPONSIBILITY, WARRANTIES, OR LIABILITIES OF ANY KIND, DIRECT OR CONSEQUENTIAL, FOR THE INFORMATION OR THE RECIPIENT'S RELIANCE UPON SAME. THOSE INTERESTED ARE RESPONSIBLE TO UNDERTAKE THEIR OWN INVESTIGATIONS AND INQUIRIES PERTAINING TO THIS INFORMATION AND ITS RELIABILITY.